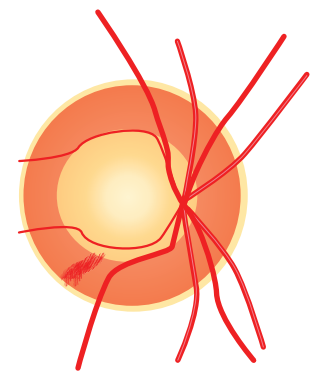
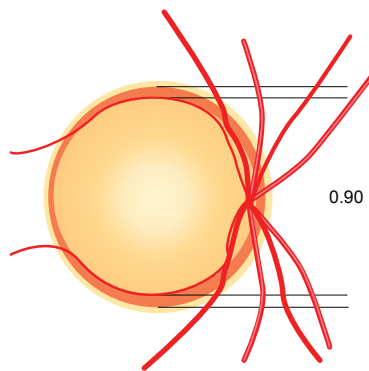
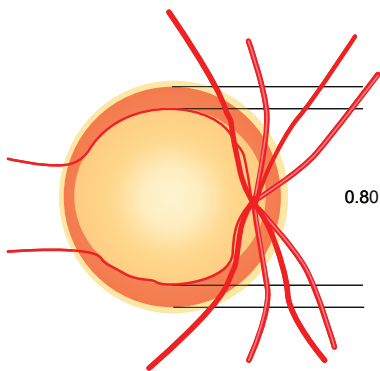
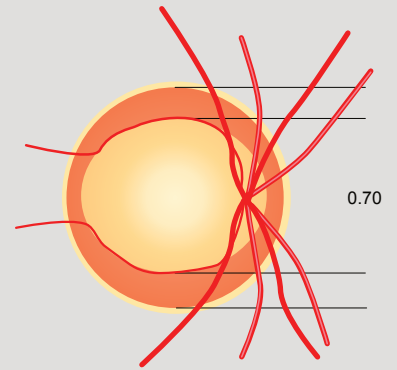
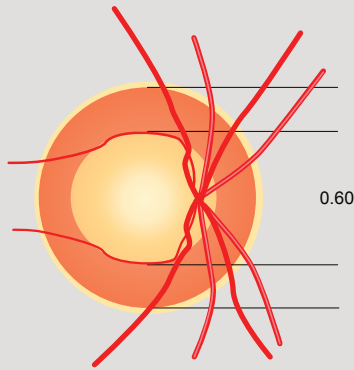
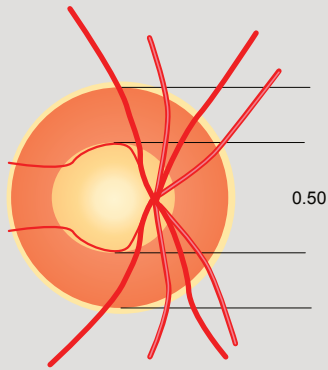
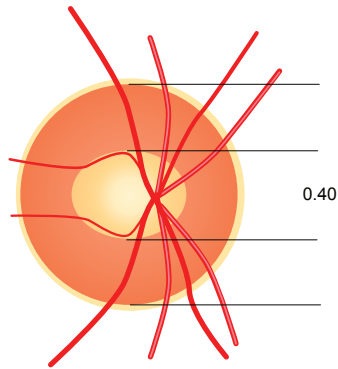
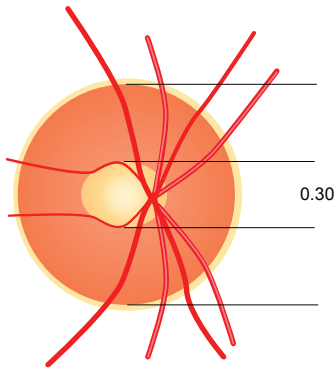
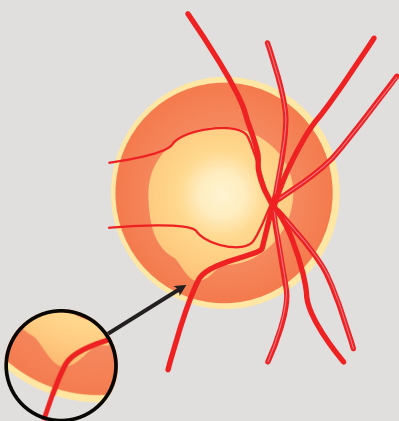


Glaucoma disc features

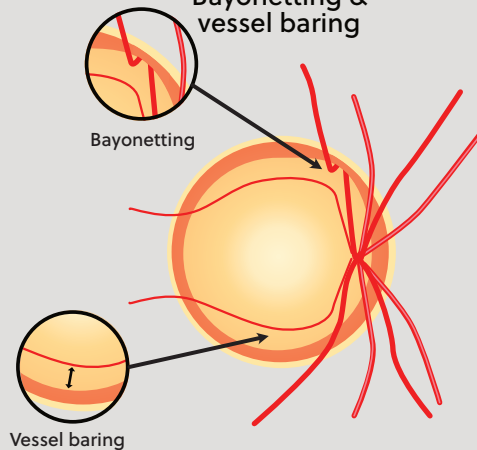


Disc haemorrhage

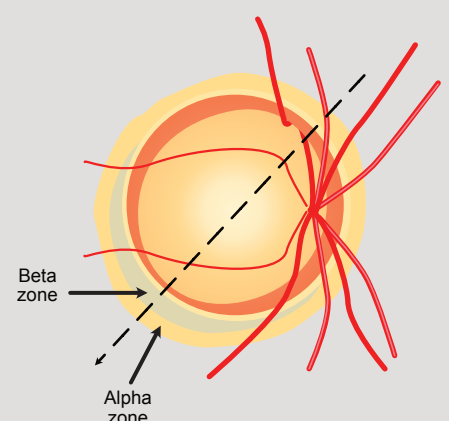
Notch



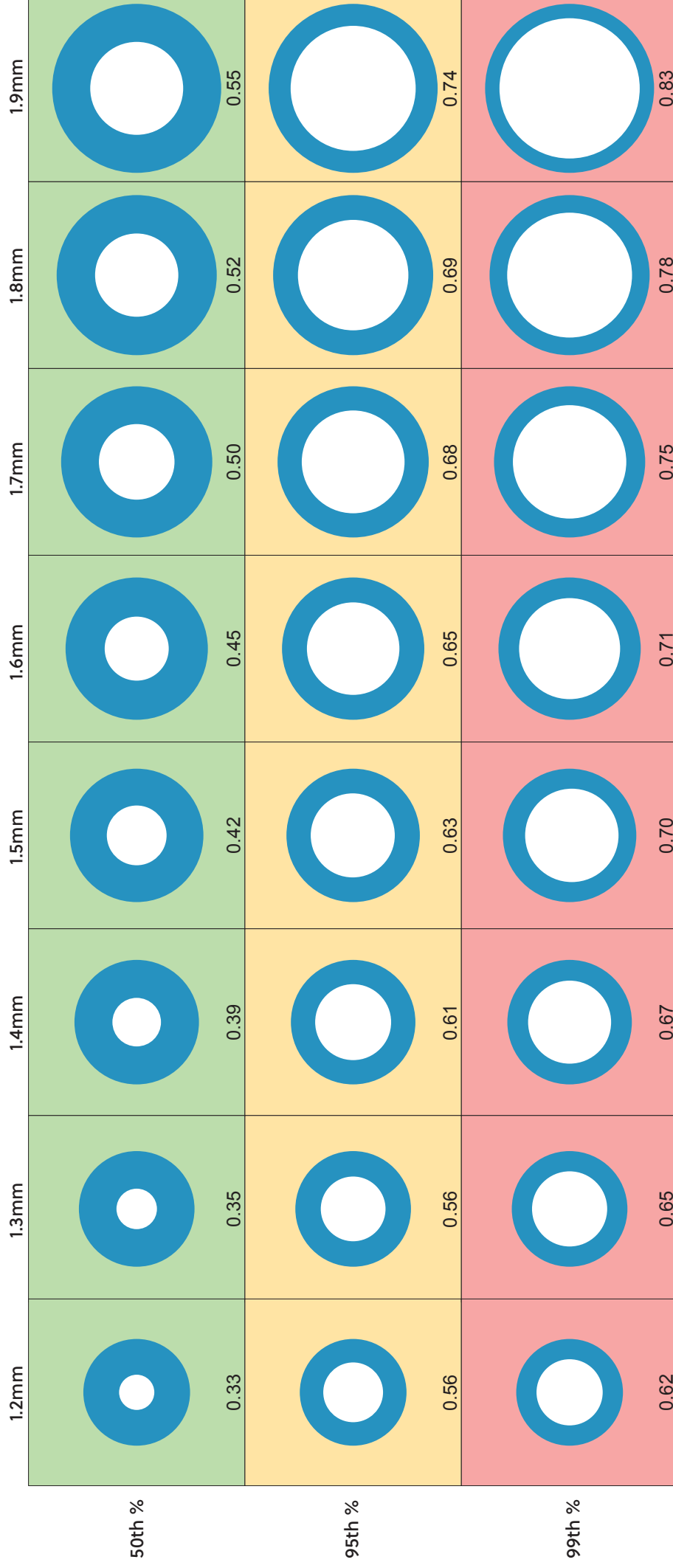
Bayonetting & vessel baring



Beta zone atrophy



Vertical disc diameter (mm)



Data represents the spread of C:D ratios found in various optic nerve sizes **excluding** eyes with glaucoma.

C:D ratios at the 50th percentile are likely to be normal. At the 95th percentile there are very few normal optic discs with C:D ratios at this level. At the 99th percentile only 1% of non-glaucomatous eyes have a C:D ratio of this size.

As the likelihood of normality decreases the level of suspicion should increase.

Accompanying OT
Skills guide video

